

**Ergonomic Solutions**

# OWNER'S MANUAL

**ALUMINUM QUICK LIFTS  
 MODEL PEL-88A & PEL-100A  
 STEEL QUICK LIFT MODELS PEL-88,  
 PEL-100, PEL-100-SWA & PEL-400**

**CONTENTS**

Warning and Safety Instructions .....	1	Chain Tension Adjustment for PEL-88 .....	7
Receiving Instructions .....	1	Parts for PEL-88 & PEL-100 .....	8-9
Loading Instructions .....	2	Parts Diagram & Breakdown PEL-100-SWA ...	10-11
Operating Instructions .....	2	Warning Labels for PEL-88 & PEL-100 .....	12
Electrical Diagram .....	3	Chain Tension Adjustment for PEL-400 .....	13
Troubleshooting Guide .....	4	Parts for PEL-400 .....	14-15
Parts for PEL-88A & PEL-100A .....	5	Warning Labels for PEL-400 .....	16
Warning Labels for PEL-88A & PEL-100A.....	6	Limited Warranty .....	17

E  
N  
G  
L  
I  
S  
H

**WARNINGS & SAFETY INSTRUCTIONS**

*Read owner's manual completely before operating unit!*

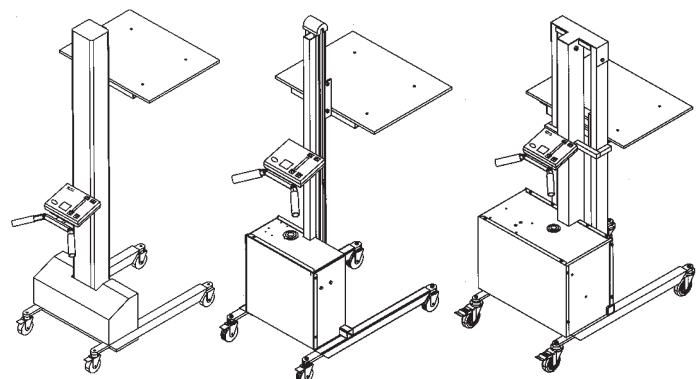
- Never go under deck if there is load on unit.
- Never operate unit unless you are watching it.
- Stand clear from load when operating.
- Do not operate unit unless all cover plates are securely in place.
- Do not continue to press the up-button if deck is not raising.
- Never exceed the maximum loading capacity  
 model PEL-88A & PEL-88 ..... 175 lbs.  
 model PEL-100A & PEL-100 ..... 125 lbs.  
 model PEL-400-57 & PEL-400-72 ..... 400 lbs.
- Load must be evenly distributed on deck to ensure stability.
- Consult factory for uneven loading.
- Always operate unit on a level surface to ensure stability.
- Always apply wheel brakes when unit is not being moved.
- Use caution in moving a loaded unit; avoid obstructions and floor defects.
- Remove load & disconnect power before working on unit.
- Consult factory if adding or performing any modifications to the original equipment.
- Use only maintenance parts supplied or approved by the manufacturer.
- Make sure all operator safety labels are in place.

**RECEIVING INSTRUCTIONS**

Every unit is thoroughly tested and inspected prior to shipment. However, it is possible that the unit may incur damage during transit. If you see damage when unloading make a note of it on the SHIPPER RECEIVER.

Remove all packing and strapping material, inspect for damage. IF DAMAGE IS EVIDENT, FILE A CLAIM WITH THE CARRIER IMMEDIATELY! Also, check the unit size, type of power unit, etc., to ensure the unit is correct for the intended application.

E  
S  
P  
A  
N  
O  
L



PEL-88A  
PEL-100A

PEL-88  
PEL-100

PEL-400-57  
PEL-400-72

**ALUMINUM & STEEL  
 QUICK LIFTS**

F  
R  
A  
N  
Ç  
A  
I  
S

## LOADING INSTRUCTIONS

The load capacity rating as inscribed on the nameplate of your unit designates the net capacity, assuming the load is centered on the deck. This capacity must never be exceeded, as permanent damage or injury may result.

## OPERATING INSTRUCTIONS

Position of the deck is controlled by the raise/lower buttons on the touchpad. Speed is controlled from touchpad. A hand-held pendant control is optional.

## BATTERY RECHARGING & CARE

The battery is completely sealed and is, therefore, maintenance-free and drip proof.

The on-board charger operates on 115VAC and requires a 3-wire (grounded) extension cord. It monitors and reacts to the battery voltage, turning on the green LED on top of the charger when the batteries are fully charged.

A fully charged battery in good condition should read 12.65 volts. Wait at least 1/2 hour after the charger has been turned off before checking the battery voltage.

Charge the batteries for at least four hours prior to first use. The charge interval of this unit will vary based on the load and frequency of use. Since the majority of applications require less than the maximum capacity and only intermittent use the actual time between charging will only be found through experience. Also, the batteries should be fully recharged each time. This will increase the battery life.

- Charge unit at least once every two weeks.
- Leave plugged in when not in used. Disconnect battery when storing the unit without power for more than one month.
- The battery charger can be connected for extended periods without damage to the batteries.
- Do not expose the lift or charger to rain or adverse conditions.

## RESPONSIBILITIES OF OWNERS/USERS

*It is the responsibility of the owner/user for the following:*

- 1) The unit must be inspected and maintained in accordance with the guidelines in this manual.
- 2) Any unit not in safe operating condition must be removed from service until it is returned to proper operating condition. All repairs and maintenance must be performed by qualified personnel.
- 3) Unit may only be used by authorized personnel. All operators must have read and understood all operating procedures and safety guidelines in this Owner's Manual.
- 4) Operator must ensure that all safety features of the unit are functioning properly before each use.

## PERIODIC MAINTENANCE INSTRUCTIONS



**BE SURE ALL POWER IS OFF BEFORE ATTEMPTING TO WORK ON THIS EQUIPMENT!**

**CAUTION: SERVICE WORK SHOULD BE PERFORMED ONLY BY TRAINED & QUALIFIED PERSONNEL**

Before Each Use Check For The Following:

- 1) Structural deformation of frame.
  - 2) Proper operation of casters.
  - 3) Unusual noise or binding.
  - 4) Signs of wear, fatigue or loosening of any moving parts and contact areas.
  - 5) Check chain tension and adjust if applicable (see chain tension adjustment section).
- WARNING!**  
**Over tensioning of the chain can cause potential damage and/or injury.**
- 6) Wear on the chain roller bushings.
  - 7) Cover plates being securely in place.

**DO NOT use if there are any of the above!**

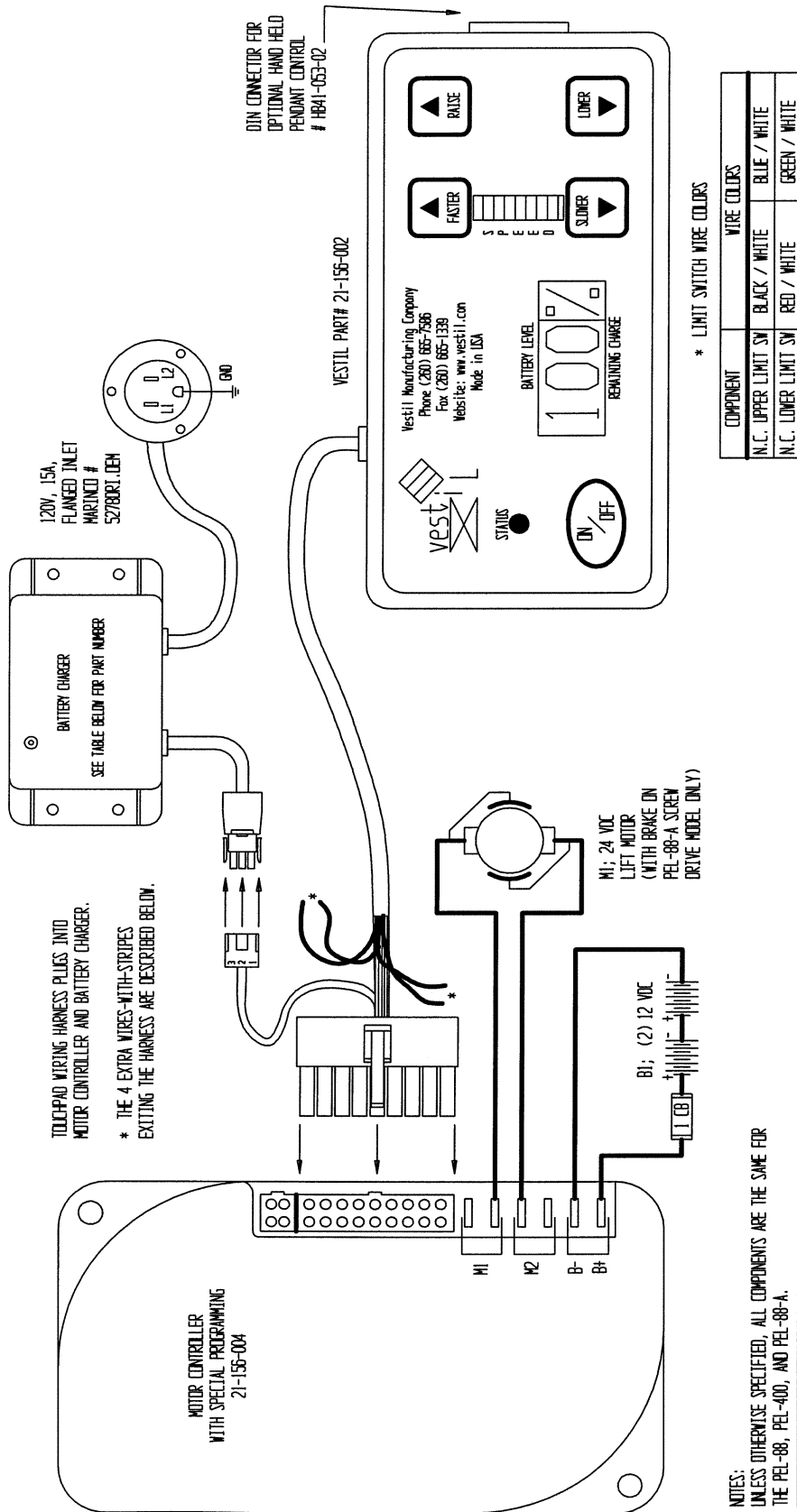
Monthly Inspections

- 1) Check for frayed or loose wires.
- 2) Clean off dirt and debris at all contact areas.
- 3) Make sure all warning and safety labels are in place and in good condition.
- 4) Battery Condition

## Ordering Replacement or Extra Parts

Our company takes pride in using the finest available parts for our equipment. We are not responsible for equipment failure resulting from the use of unapproved replacement parts. To order replacement or extra parts for your equipment contact Customer Service at the factory. In any correspondence with the factory please include the Serial Number which is inscribed on the nameplate of the piece of equipment. Use only the part numbers provided in this Owner's Manual.

# ELECTRICAL DIAGRAM FOR ALUMINUM & STEEL QUICKLIFTS



NOTES:  
UNLESS OTHERWISE SPECIFIED, ALL COMPONENTS ARE THE SAME FOR THE PEL-88, PEL-400, AND PEL-88-A.

COMPONENT	PEL 88, 100	PEL 88 A, 100 A	PEL 400
MOTOR	21-641-001	21-641-003, -004	21-641-002
BATTERIES: B1	21-139-001	21-139-001	21-139-002
I CB	21-034-006	21-034-006	21-034-004
CHARGER	21-034-002	21-034-002	21-034-007
ILS; ROLLER ARM	NONE	NONE	01-022-001
PART NO.	21-124-019	21-124-032	21-124-020

# TROUBLESHOOTING QUICK REFERENCE GUIDE FOR STEEL QUICKLIFTS



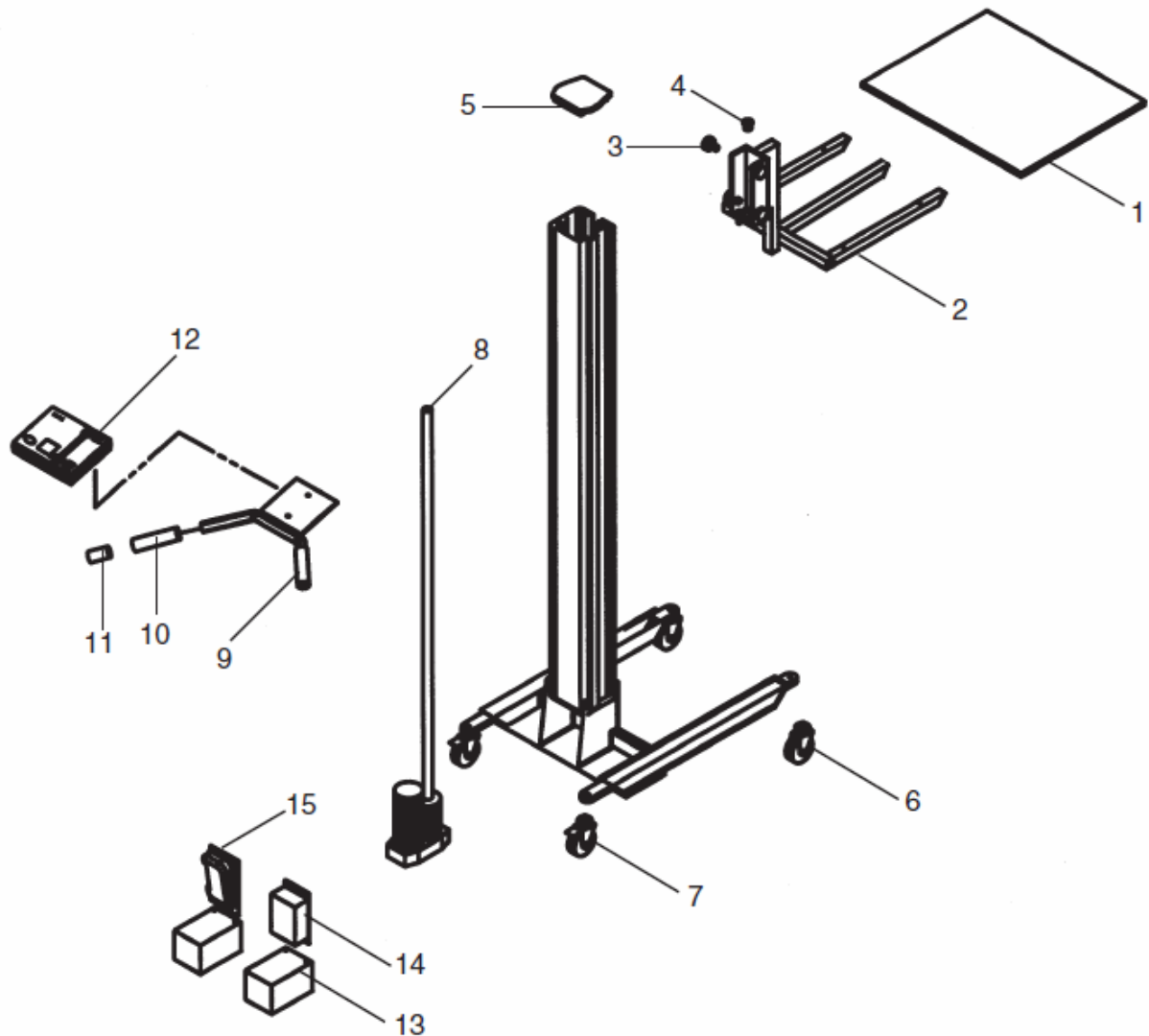
**BE SURE ALL POWER IS OFF AND ALWAYS UNLOAD LIFT BEFORE ATTEMPTING TO  
WORK ON THIS EQUIPMENT!**

**CAUTION: SERVICE WORK SHOULD BE PERFORMED ONLY BY TRAINED & QUALIFIED PERSONNEL**

Observation	Possible Cause	Remedy
1.) Power unit does not run when control is operated.	<ul style="list-style-type: none"> <li>a. Battery voltage low. (&lt; 17) (LED flashes • •••)</li> <li>b. Bad wiring connection / broken wire in circuit.</li> <li>c. Hand control's plug loose in the touchpad socket.</li> <li>d. Problem with moror/control (check for LED flashes code on the touchpad).</li> <li>e. Unit is plugged into a 115V circuit.</li> <li>f. CB or Fuse Blown</li> </ul>	<ul style="list-style-type: none"> <li>a. Charge battery.</li> <li>b. Visually inspect wires, do continuity checks with meter. Refer to electrical diagram.</li> <li>c. Push plug in place.</li> <li>d. Consult diagnostics page.</li> <li>e. Unplug cord.</li> <li>f. Reset CB. Replace fuse.</li> </ul>
2.) Motor hums, platform would not move.	<ul style="list-style-type: none"> <li>a. Battery voltage low.</li> <li>b. Platform overloaded.</li> <li>*c. Chain/Master link broken.</li> <li>d. Obstruction/jammed chain.</li> </ul>	<ul style="list-style-type: none"> <li>a. Charge battery.</li> <li>b. Check load; reduce if necessary.</li> <li>c. Inspect chain, rollers, roller track, and pulley assembly.</li> <li>d. Clear Obstruction.</li> </ul>
3.) Unit turns off before reaching the fully raised or lowered height.	<ul style="list-style-type: none"> <li>a. Battery voltage low.</li> <li>b. Platform roller bearing obstructed or is binding.</li> <li>c. The "platform raised" limit switch is engaged too soon, or is bad (PEL-400 only).</li> <li>d. Platform overloaded.</li> </ul>	<ul style="list-style-type: none"> <li>a. Charge battery.</li> <li>b. Inspect roller track for interference or damage.</li> <li>c. Adjust the limit switch pulley spring's tension; test switch with meter.</li> <li>d. Check load; reduce if necessary.</li> </ul>
4.) Over/under temp cutback. (LED flashes • •)	<ul style="list-style-type: none"> <li>a. Temperature &gt; 92°C or &lt; -25°C.</li> </ul>	<ul style="list-style-type: none"> <li>a. Check load; reduce if necessary.</li> </ul>
5.) Pot high or low signal out of range. (LED flashes • • • or • • • • or • • • • • • • •)	<ul style="list-style-type: none"> <li>a. Throttle input wire open or shorted.</li> <li>b. Throttle pot defective.</li> </ul>	<ul style="list-style-type: none"> <li>a. Verify wiring not damaged.</li> <li>b. Consult factory.</li> </ul>
6.) Speed limit pot fault. (LED flashes • • • •)	<ul style="list-style-type: none"> <li>a. Speed limit pot wire(s) broken or shorted.</li> <li>b. Broken speed limit potentiometer.</li> </ul>	<ul style="list-style-type: none"> <li>a. Verify wiring if not damaged.</li> <li>b. Consult factory.</li> </ul>
7.) Precharge Fault (LED • • • • •)	<ul style="list-style-type: none"> <li>a. Controller failure; low battery voltage.</li> </ul>	<ul style="list-style-type: none"> <li>a. Charge battery.</li> </ul>
8.) Current sense voltage fault (LED • • • • • • • •)	<ul style="list-style-type: none"> <li>a. Short in motor or in motor wiring.</li> <li>b. Controller failure.</li> </ul>	<ul style="list-style-type: none"> <li>a. Verify motor wiring.</li> <li>b. Consult factory.</li> </ul>
9.) Motor Clicks	<ul style="list-style-type: none"> <li>a. Overloaded deck.</li> </ul>	

**NOTE: TOUCHPAD IS NOT SERVICEABLE.  
DO NOT OPEN TOUCHPAD OR WARRANTY WILL BE VOID!!!**

**PARTS DRAWING FOR ALUMINUM QUICK LIFT  
MODEL PEL-88A & PEL-100A**



E  
N  
G  
L  
I  
S  
H

**PARTS IDENTIFICATION FOR ALUMINUM QUICK LIFT  
MODEL PEL-88A & PEL-100A**

ITEM NO.	DESCRIPTION	ENGINEER NO.	QTY
1	Deck - 24"W x 20" L	21-013-064	1
2	Deck Assembly	42-513-002	1
3	Delrin 1.36in. x 0.375in. aluminum roller assembly	42-527-001	4
4	Nut, Threaded ACME (PEL-88A)	42-145-001	1
5	Cover, Top Mast	42-024-002	1
6	Caster, w/out Brake	16-132-070	2
7	Caster, Swivel with Brake	16-132-071	2
8	Drive Assembly (screw drive) (PEL-88A)	21-641-003	1
8	Drive Assembly (screw drive) (PEL-100A)	21-641-004	1
9	Handle Assembly	42-525-001	1
10	Handle Grip	15-025-006	2
11	Handle End Cap	n/a	2
12	Controller, Touchpad	21-156-002	1
13	Battery (12V each)	21-139-001	2
14	Battery Charger (24V 3 amp)	21-034-002	1
15	Controller, Motor	21-156-004	1
*16	Cover Power Unit	42-024-001	1

\* Not Shown in Diagram

## WARNING LABEL IDENTIFICATION For Aluminum Quick Lift • Model PEL-88A & PEL-100A

*MAKE SURE ALL WARNING LABELS ARE IN PLACE!*

\*Product safety signs or labels should be periodically inspected and cleaned by the product users as necessary to maintain good legibility for safe viewing distance ... ANSI 535.4 (10.21)  
Contact manufacturer for replacement labels.

1

<b>WARNING</b>	<b>ADVERTENCIA</b>	<b>AVERTISSEMENT</b>
<b>KEEP CLEAR WHEN IN USE</b>	<b>MANTENGASE ALEJADO CUANDO SE ESTA OPERANDO</b>	<b>SE TENIR À DISTANCE LORS DU FONCTIONNEMENT</b>
		<b>220</b>

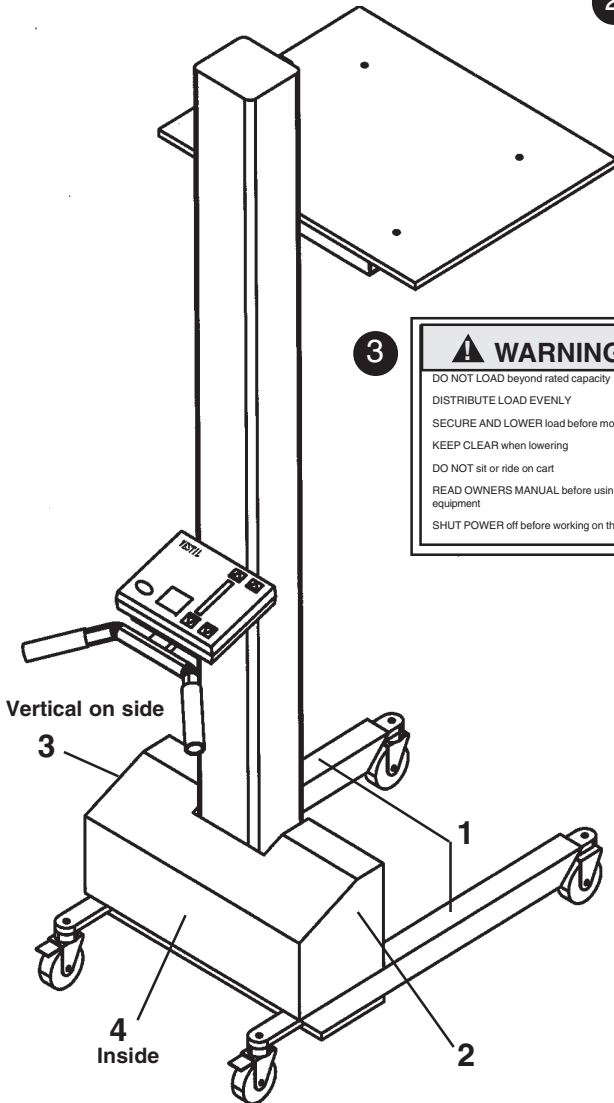
2

<p>Charge unit at least every two weeks or leave plugged in when not in use. Disconnect battery when storing unit without power for more than one month.</p> <p>Cargue la unidad por lo menos cada dos semanas o enchupelo cuando no en uso. Desconecte la batería al salvar la unidad sin carga por más de un mes.</p> <p>Charger l'unité au moins deux fois par semaine ou laisser branché lorsque la batterie lorsque l'unité est rangée et ne va pas fonctionner pendant plus d'un mois.</p>
<b>454</b>

VESTIL MANUFACTURING CORP. • Angola, IN 46703 USA  
Phone (260) 665-7586 • Fax (260) 665-1339 • www.vestil.com

3

<b>WARNING</b>	<b>ADVERTENCIA</b>	<b>AVERTISSEMENT</b>
<p>DO NOT LOAD beyond rated capacity</p> <p>DISTRIBUTE LOAD EVENLY</p> <p>SECURE AND LOWER load before moving</p> <p>KEEP CLEAR when lowering</p> <p>DO NOT sit or ride on cart</p> <p>READ OWNERS MANUAL before using or working on this equipment</p> <p>SHUT POWER off before working on this equipment</p>	<p>NO CARGUE más allá de la capacidad tasada</p> <p>DISTRIBUYA LA CARGA UNIFORMEMENTE</p> <p>ASEGURE Y DESCienda la carga antes de mover</p> <p>MANTENGASE ALEJADO cuando descendi</p> <p>NO SE SIENTE o vaya en el carro</p> <p>LEA EL MANUAL DEL PROPIETARIO antes de usar o trabajar en este equipo</p> <p>Apaga el equipo antes de trabajar en él</p>	<p>NE PAS CHARGER au-delà de capacité</p> <p>DISTRIBUER la charge régulièrement</p> <p>BIEN FIXER ET FAIRE DESCENDRE la charge avant de faire un mouvement</p> <p>VOUS DEGAGER quand la charge descend</p> <p>NE PAS VOUS ASSEoir OU VOUS PROMENER sur le chariot</p> <p>LIRE LE GUIDE avant d'utiliser ou de travailler sur cet équipement</p> <p>COUPER L'ALIMENTATION avant de faire des travaux sur cet équipement</p>
		<b>589</b>



4

**PEL BATTERY CONNECTIONS**

The red wire (from T1 on the motor controller) connects to one side of the circuit breaker. The other side of the circuit breaker connects to the positive (+) post (red) on BAT1.

The short jumper wire connects between the BAT1 negative (-) post (black) and BAT2 positive (+) post (red).

The unfused black wire (from T2 on the controller) connects to the negative (-) post (black) on BAT2.

The charger plugs into the quick-connect harness located on the end of the touchpad harness.

---

**CONEXIONES DE LA BATERIA PEL**

El alambre rojo (del T1 en el control del motor) se conecta a un lado del corto circuito. El otro lado del corto circuito se conecta al poste (rojo) positivo (+) en BAT1.

El alambre de salto corto se conecta entre el poste (negro) BAT1 negativo (-) y el poste (rojo) BAT2 positivo (+).

El alambre negro sin fusible (del T2 en el control) se conecta al poste (negro) negativo (-) en el BAT2.

El cargador se enchufa en el equipo de conexión rápida localizado en el extremo del equipo del teclado.

---

**CONNEXIONS DE BATTERIE PEL**

Le fil rouge (de T1 sur le contrôleur du moteur) connecte à un côté du disjoncteur. L'autre côté du disjoncteur connecte à l'anode (borne positive) - rouge - de BAT1.

Le fil de liaison court connecte entre la cathode BAT1 (négative) - noir - et l'anode BAT2 (positive) - rouge.

Le fil noir sans fusible (de T2 sur le régulateur de charge) connecte à la borne négative (noir) de BAT2.

Le chargeur de batterie branche à la distribution électrique de la prise de courant située sur le bout de la touche à effileurement.

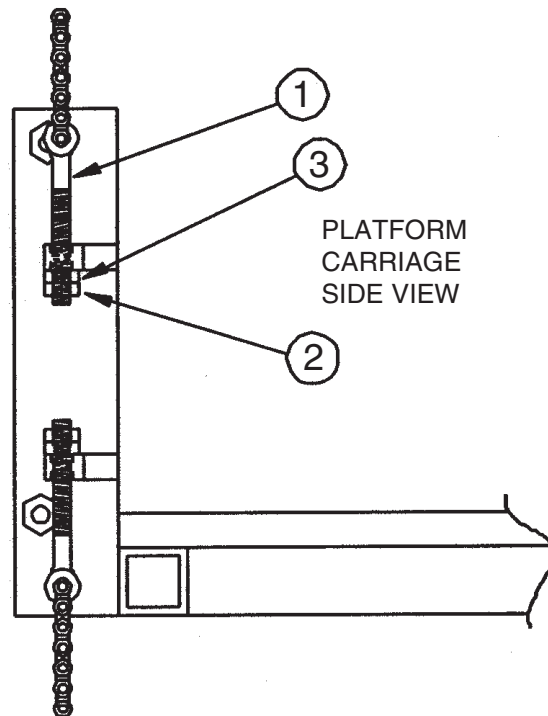
**399**

## INSTRUCTIONS FOR ADJUSTING THE LIFTING CHAINS TENSION FOR STEEL QUICKLIFT • MODEL PEL-88

### **READ ALL INSTRUCTIONS BEFORE PROCEEDING!**

**Only trained and qualified service personnel should work on this equipment!  
Lock out all potential energy sources before attempting this installation!**

- 1) Remove any load that is on the machine and run the platform up until it is raised halfway up the mast.
- 2) Above the platform, locate the tensioning bolts (item 1; one at each end of the chain). Loosen the two jamb nuts (item 2) by turning them in a counterclockwise direction. (Use a 7/16" wrench on the nut, and another 7/16" wrench to keep the chain from turning.) Loosen each until it is at the end of its respective chain tension bolt.
- 3) Run the platform all the way up to the top of the mast until it stops moving.
- 4) Again using the 7/16" wrenches, turn the tensioning nuts (item 3) at each end of the chain until you can pull the chain 3" away from the front of the mast at its midheight. Be sure to turn each nut about the same amount.
- 5) Lower the platform to the bottom of the mast, holding the "Lower" pushbutton for two seconds after the platform hits bottom. If the chain "jumps" onto the sprocket, raise the platform up again. Tighten one of the tensioning nuts another 1/2 turn (clockwise) and repeat the test.
- 6) Raise the platform back up halfway to the top of the mast and turn each of the jamb nuts until they are against the tensioning nuts; then tighten each one wrench-tight.



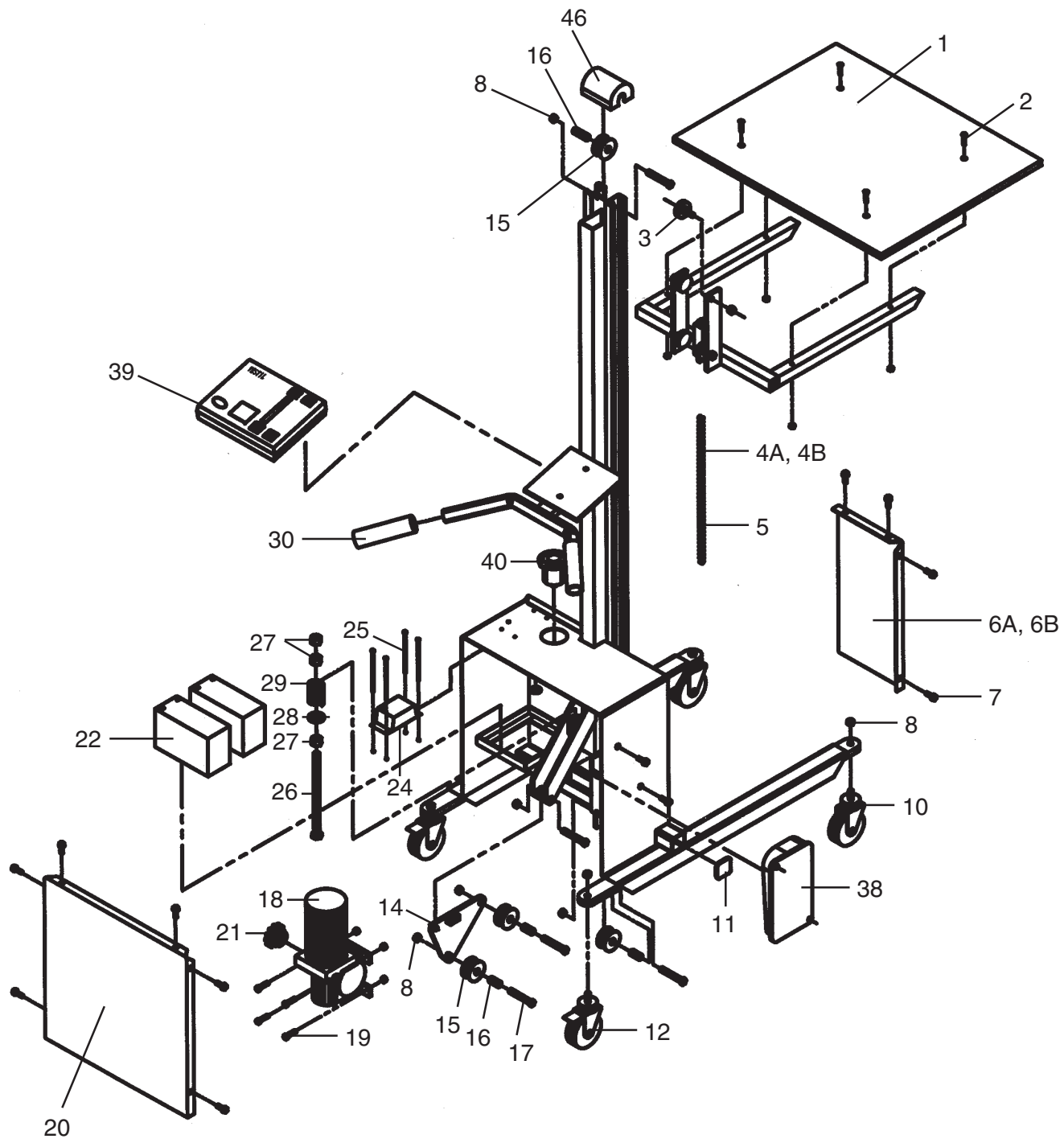
#### CAUTIONS:

- Double-check that both of the holding nuts have been adequately tightened down before placing the machine back into service.

#### NOTES:

- The chain's tension, the tension bolts, and the adjustment nuts should all be checked monthly.

### PARTS DRAWING FOR STEEL QUICK LIFT MODEL PEL-88 & PEL-100





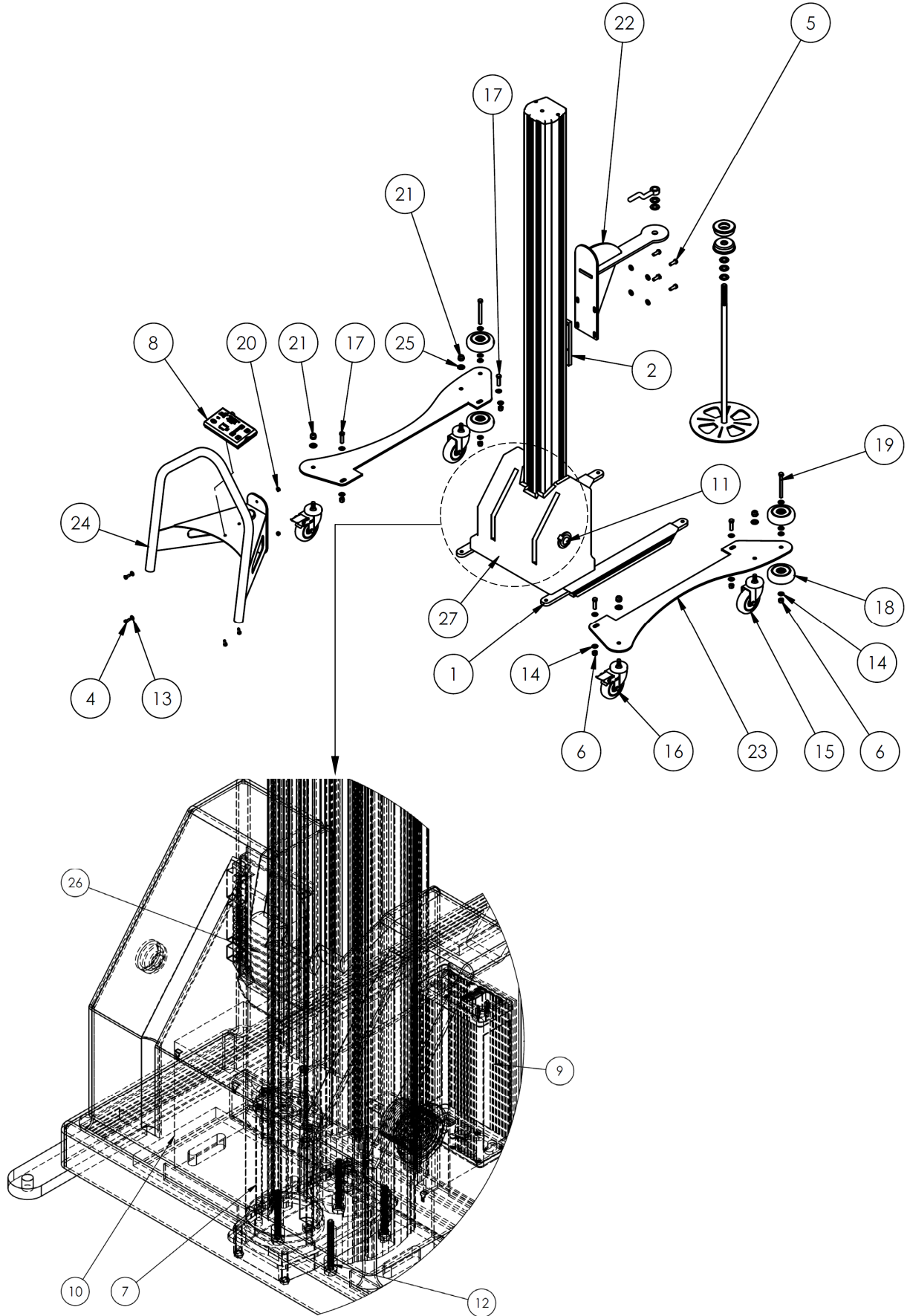
**PARTS IDENTIFICATION FOR STEEL QUICK LIFT  
MODEL PEL-88 & PEL-100**

ITEM NO.	DESCRIPTION	ENGINEER NO.	PART NO.	QTY
1	Deck 24"W x 19"L	21-013-057	PEL-DCK	1
2	Screw & nylock nut,	n/a	n/a	-
3	Roller w/nylock nut, 5/16"-18UNC	20-110-008	PEL-RNYKNT	4
4A	Chain, no.35 x 127" lg (PEL-88)	21-042-012	PEL-CHN127	1
4B	Chain no. 35 x 157" lg (PEL-100)	21-042-013	PEL-CHN157	1
5	Chain Connecting Link 41-1/2" pitch - 1/4 width	21-042-014	PEL-CC	1
6A	Front Cover (left side)	21-024-013	PEL-FCLS	1
6B	Front cover (right side)	21-024-014	PEL-FCRS	1
7	Screw, 1/4"-20UNC x 3/4" (Type F, HWH)	n/a	n/a	-
8	Nylock nut, 3/8"-16UNC	n/a	n/a	-
10	Caster w/o brake	16-132-070	PEL-CSTR	2
11	Plastic cap	21-024-016	PEL-PC	2
12	Caster w/Brake (3 x 1-1/2)	16-132-071	PEL-CSTBRK	2
*13	Screw, 3/8-16 unc x 5/8 (FHSCS)	n/a	n/a	-
14	Pulley bracket	21-016-050	PEL-PLYBRK	1
15	Chain Roller (plastic)	21-042-020	PEL-CHRLR	4
16	Roller Bearing	21-113-027	PEL-RLRBR	4
17	Bolt 3/8-16 unc x 1-3/4" (HHCS)	n/a	n/a	-
18	Motor (Leeson)	21-641-001	PEL-MTR	1
19	Bolt & Nylock Nut 1/4-20 unc x 1-1/4	n/a	n/a	-
20	Back Cover	21-024-012	PEL-BC	1
21	Sprocket 5/8" bore w/keyway & set screw	21-042-015	PEL-SKT5/8	1
22	Battery	21-139-001	PEL-BATT	2
24	Battery Charger	21-034-002	PEL-BATTCHR	1
25	Bolt & Nylock Nut & Washer - 1/8-27 unc x 4 (HHCS)	n/a	n/a	-
26	Spring Rod Bolt 1/2-13 unc x 8	n/a	n/a	-
27	Spring Rod Nut 1/2-13 unc	n/a	n/a	-
28	Washer 1/2 x 1-1/2 Fender Washer 2 plated	n/a	n/a	-
29	Spring	21-146-004	PEL-SPG	1
30	Handle Grip	15-025-006	PEL-HG	2
*31	Hand Control w/Coil Cord (optional)	99-522-001	PEL-CNTL	1
*35	Bolt 3/8-16 unc x 2-1/4 (HHCS)	n/a	n/a	-
*37	Circuit Breaker	21-034-006		1
38	Motor Controller	21-156-004	PEL-MTRCNTL	1
39	Touchpad	21-156-002	PEL-TCHPD	1
40	Power Inlet, 115V w/ 1-1/2" Nut	21-034-005	PEL4-PINLT	-
*42	Bolt Control Mt. 8-32 unc x 1	n/a	n/a	-
*44	Bolts, Chain Adjusting 1/4-20 x 2 eyebolt	n/a	n/a	-
*45	Nuts, Chain Adjusting Bolt 1/4-20	n/a	n/a	-
46	Chain Cover	21-524-001	PEL-CHNCVR	1
*47	Chain Cover Retaining Bolts (400 series only)			
*48	Bolt (400 series only)			
*49	Nut 8-32 unc	n/a	n/a	
*50	Washer (400 series only)			
*51	Nuts, Motor Controller 8-32 unc	n/a	n/a	

\* Not Shown in Diagram

E  
N  
G  
L  
I  
S  
H

PEL-100-SWA EXPLODED PARTS DIAGRAM AND BILL OF MATERIALS



**PEL-100-SWA BILL OF MATERIALS**

<b>Item no.</b>	<b>Part no.</b>	<b>Description</b>	<b>Quantity</b>
1	42-514-003	Weldment, frame	1
2	42-538-001	Weldment, carriage	1
3	20-110-008	Roller bearing	4
4	11003	$\frac{1}{4}$ in. – 20 UNC x $\frac{3}{4}$ in. bolt	4
5	11105	$\frac{3}{8}$ in. – 16 UNC x 1 in. bolt	4
6	37024	$\frac{3}{8}$ in. lock nut	6
7	21-135-001	Motor	1
8	21-156-002	Electronic touchpad controller	1
9	21-034-010	24V battery charger	1
10	21-139-001	12 VDC battery	2
11	21-034-025	Flanged electrical inlet sleeve with locking ring	1
12	11012	$\frac{1}{4}$ in. – 20 x $2\frac{1}{4}$ in. HHCS #2 zinc-plated bolt	4
13	33004	$\frac{1}{4}$ in. type A narrow flat washer	2
14	33008	$\frac{3}{8}$ in. USS zinc-plated flat washer	20
15	16-132-155	HR-4/1.25-SLB-S swivel-type polyurethane stem caster	2
16	16-132-156	HR-4/1.25-SLB-S swivel-type polyurethane stem caster	2
17	11109	$\frac{3}{8}$ in. – 16 UNC x $1\frac{1}{2}$ in. HHCS #2 zinc-plated bolt	4
18	16-132-009	PP-4/1.25-W polyurethane wheel	4
19	11119	$\frac{3}{8}$ in. – 16 UNC x 4 in. HHCS bolt	2
20	37018	$\frac{1}{4}$ in. – 20 UNC zinc-plated lock nut	2
21	37030	$\frac{1}{2}$ in. – 13 lock nut	4
22	20-538-002	Stretch wrap carriage assembly	1
23	20-016-076	Roller bracket	2
24	20-525-001	Handle weldment	1
25	33011	$\frac{1}{2}$ in. USS plain flat washer	4
26	21-156-006	Electrical control box	1
27	21-024-042	Motor cover	1

# WARNING LABEL IDENTIFICATION

## For Steel Quick Lift • Model PEL-88 & PEL-100

MAKE SURE ALL WARNING LABELS ARE IN PLACE!

1

WARNING	ADVERTENCIA	AVERTISSEMENT
KEEP CLEAR WHEN IN USE	MANTENGASE ALEJADO CUANDO SE ESTA OPERANDO	SE TENIR À DISTANCE LORS DU FONCTIONNEMENT

\*Product safety signs or labels should be periodically inspected and cleaned by the product users as necessary to maintain good legibility for safe viewing distance ... ANSI 535.4 (10.21)  
Contact manufacturer for replacement labels.

2

Charge unit at least every two weeks or leave plugged in when not in use. Disconnect battery when storing unit without power for more than one month.

Cargue la unidad por lo menos cada dos semanas o enchupelo cuando no en uso. Desconecte la batería al salvar la unidad sin carga por más de un mes.

Charger l'unité au moins deux fois par semaine ou laisser branché lorsque la batterie lorsque l'unité est rangée et ne va pas fonctionner pendant plus d'un mois.

VESTIL MANUFACTURING CORP. • Angola, IN 46703 USA  
Phone (260) 665-7586 • Fax (260) 665-1339 • www.vestil.com

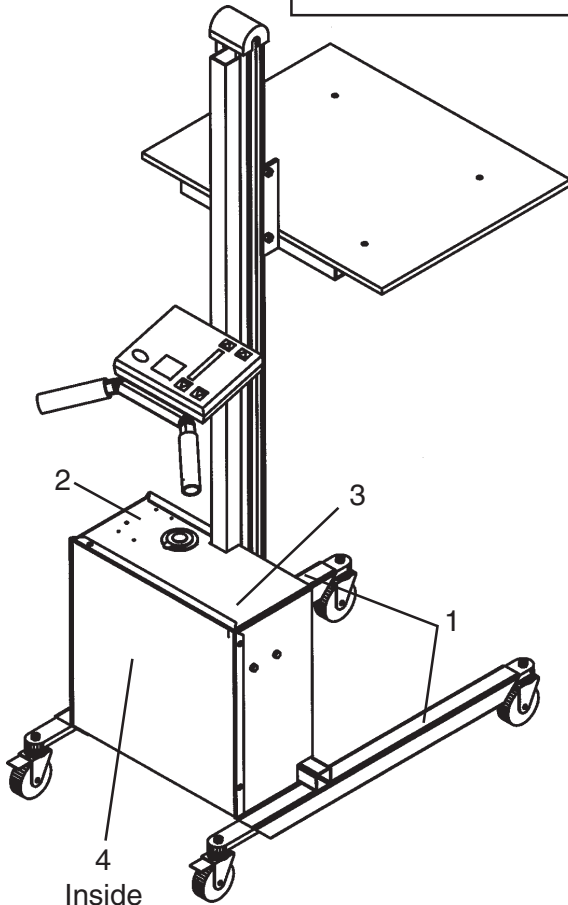
454

3

WARNING	ADVERTENCIA	AVERTISSEMENT
DO NOT LOAD beyond rated capacity DISTRIBUTE LOAD EVENLY SECURE AND LOWER load before moving KEEP CLEAR when lowering DO NOT sit or ride on cart READ OWNERS MANUAL before using or working on this equipment SHUT POWER off before working on this equipment	NO CARGUE más allá de la capacidad tasada DISTRIBUYA LA CARGA UNIFORMEMENTE ASEGURE Y DESCienda la carga antes de mover MANTENGASE ALEJADO cuando descienda NO SE SIENTE o vaya en el carro LEA EL MANUAL DEL PROPIETARIO antes de usar o trabajar en este equipo Apage el equipo antes de trabajar en él	NE PAS CHARGER au-delà de capacité DISTRIBUER la charge régulièrement BIEN FIXER ET FAIRE DESCENDRE la charge avant de faire un mouvement VOUS DEGAGER quand la charge descend NE PAS VOUS ASSEoir OU VOUS PROMENER sur le chariot LIRE LE GUIDE avant d'utiliser ou de travailler sur cet équipement COUPER L'ALIMENTATION avant de faire des travaux sur cet équipement

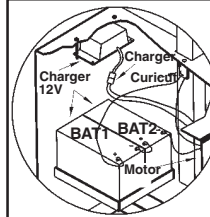
VESTIL MANUFACTURING CORPORATION • Angola, Indiana USA • Phone (260) 665-7586 • Fax (260) 665-1339 • sales@vestil.com • www.vestil.com

589



4

### PEL BATTERY CONNECTIONS



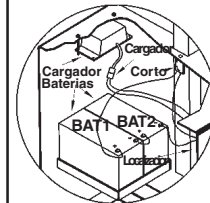
The red wire (from T1 on the motor controller) connects to one side of the circuit breaker. The other side of the circuit breaker connects to the positive (+) post (red) on BAT1.

The short jumper wire connects between the BAT1 negative (-) post (black) and BAT2 positive (+) post (red).

The unfused black wire (from T2 on the controller) connects to the negative (-) post (black) on BAT2.

The charger plugs into the quick-connect harness located on the end of the touchpad harness.

### CONEXIONES DE LA BATERIA PEL



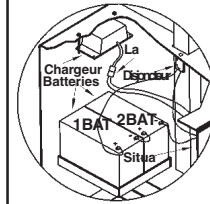
El alambre rojo (del T1 en el control del motor) se conecta a un lado del corto circuito. El otro lado del corto circuito se conecta al poste (rojo) positivo (+) en BAT1.

El alambre de salto corto se conecta entre el poste (negro) BAT1 negativo (-) y el poste (rojo) BAT2 positivo (+).

El alambre negro sin fusible (del T2 en el control) se conecta al poste (negro) negativo (-) en el BAT2.

El cargador se enchufa en el equipo de conexión rápida localizado en el extremo del equipo del telclado.

### CONNEXIONS DE BATTERIE PEL



Le fil rouge (de T1 sur le contrôleur du moteur) connecte à un côté du disjoncteur. L'autre côté du disjoncteur connecte à l'anode (borne positive) - rouge - de BAT1.

Le fil de liaison court connecte entre la cathode BAT1 (négative) - noir - et l'anode BAT2 (positive) - rouge.

Le fil noir sans fusible (de T2 sur le régulateur de charge) connecte à la borne négative (noir) de BAT2.

Le chargeur de batterie branche à la distribution électrique de la prise de courant située sur le bout de la touche à effileurement.

VESTIL MANUFACTURING CORPORATION  
Angola, Indiana USA

399

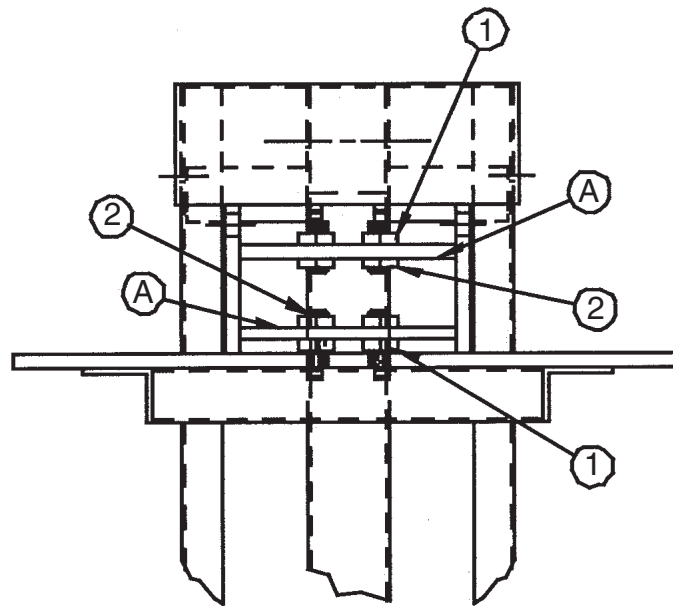
Phone (260) 665-7586 • www.vestil.com Revision 1003

## INSTRUCTIONS FOR ADJUSTING THE CHAIN TENSION OF MODEL PEL-400

### **READ ALL INSTRUCTIONS BEFORE PROCEEDING!**

**Only trained and qualified service personnel should work on this equipment!  
Lock out all potential energy sources before attempting this installation!**

- 1) Remove any load that is on the machine and run the platform up until it is raised halfway up the mast.
- 2) Above the platform, at each end of each chain, locate and turn the four holding nuts (closest to the chains; item 1) in a counterclockwise direction. (Use a 3/4" wrench on the nut, and a 1/2" wrench to keep the chain from turning.) Move the nuts as close as possible to the chains ends.
- 3) Run the platform all the way to the top of the mast until it stops moving.
- 4) Again using 3/4" and 1/2" wrenches, turn each of the four tensioning nuts (closest to the ends of the chain tensioning bolts; item 2) clockwise until you can only pull the chain 2-1/2" away from the front of the mast at its midheight. Be sure to turn each nut the same by measuring them for equal horizontal slack dimension.
- 5) Lower the platform to the mast, holding the "Lower" pushbutton for two seconds after the platform hits bottom. If the chains "jump" on the sprockets, tighten the tensioning nuts another 1/2 turn (clockwise) and repeat the test.
- 6) Raise the platform back up halfway to the top of the mast and turn each of the four holding nuts until they touch against the tensioning brackets (item A), and then tighten each one wrench-tight.



#### CAUTIONS:

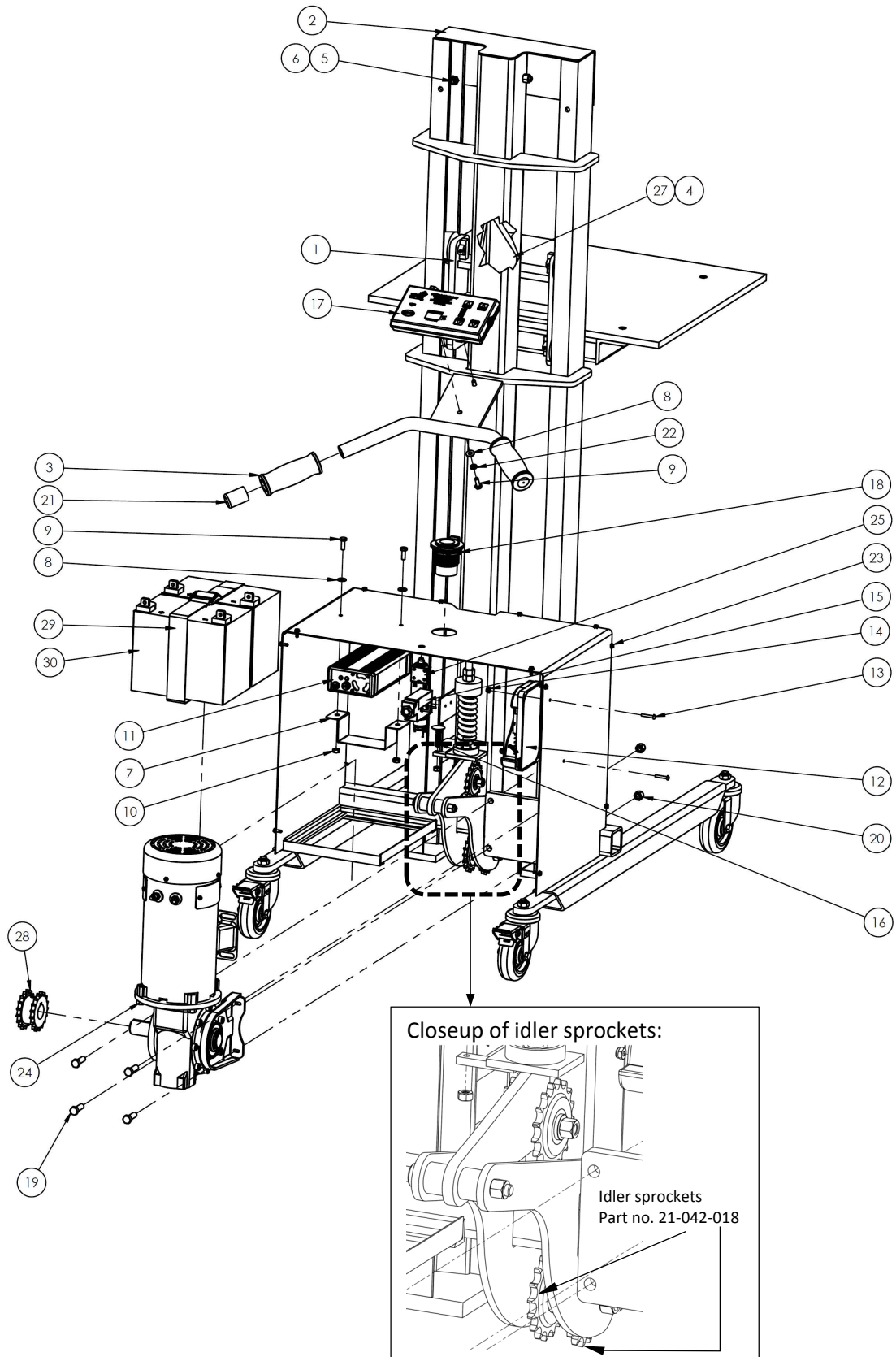
- Take care to maintain equal tension on both of the lifting chains.
- Double-check that all four of the holding nuts have been adequately tightened down before placing the machine back into service.

#### NOTES:

- The chain's tension, the tension bolts, and the adjustment nuts should all be checked monthly.

# PEL-400-57 Exploded Parts Diagram

[NOTES: Bill of materials appears on following page; item no. 26 not shown]

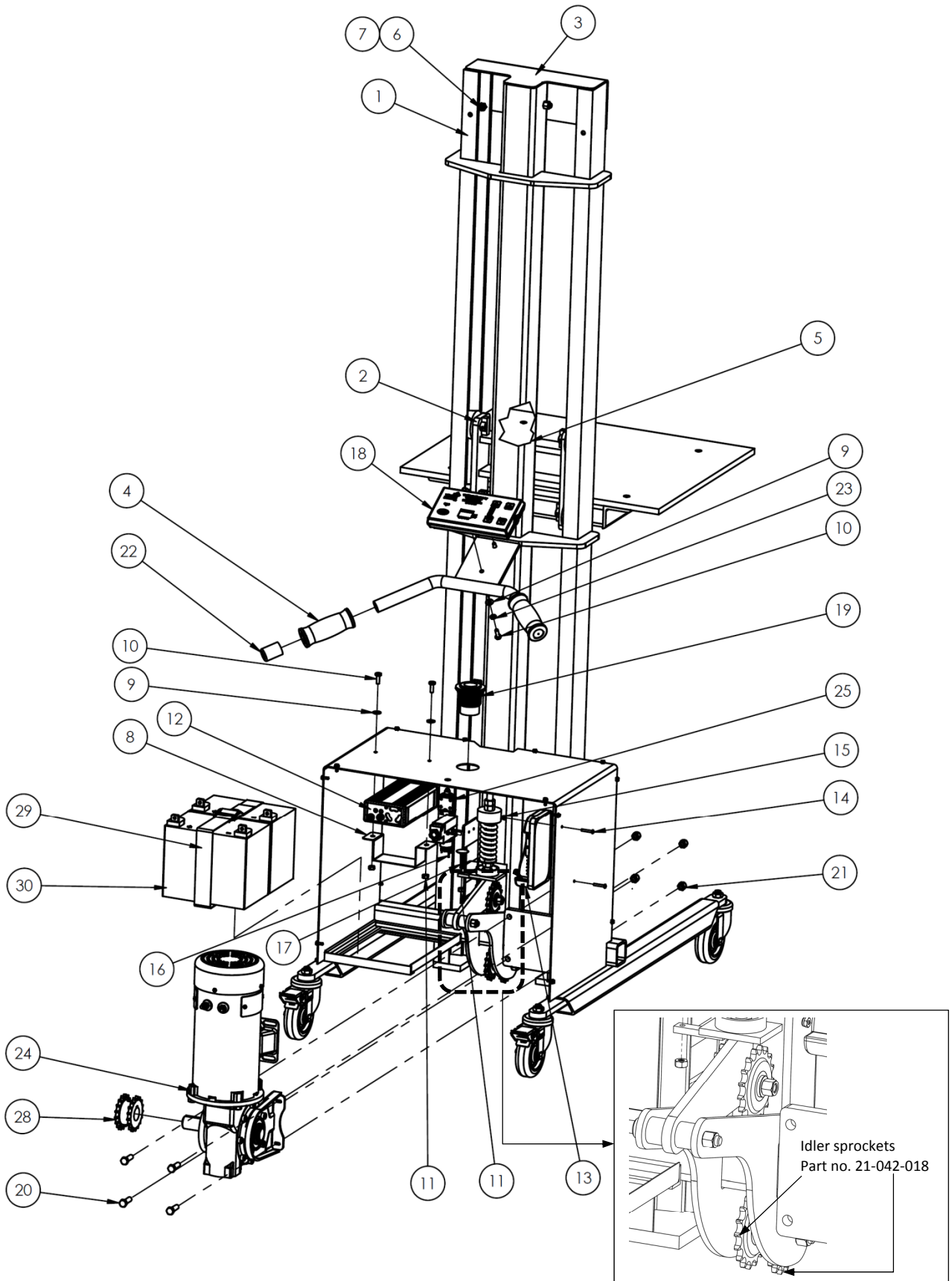


PEL-400-57 Bill of Materials:

Item no.	Part no.	Description	Quantity
1	21-513-036	Assembly, deck	1
2	21-024-029	Guard, finished, top	1
3	15-025-006	Grip, handle	2
4	36209	<sup>1</sup> / <sub>2</sub> in. – 13 hex jam nut plain	8
5	11055	<sup>5</sup> / <sub>16</sub> in. – 18 x 1in. HHCS #2 zinc-plated bolt	2
6	37021	<sup>5</sup> / <sub>16</sub> in. – 18 nylon lock nut, zinc-plated, #2	2
7	15-016-068	Bracket, battery charger mount	1
8	33004	<sup>1</sup> / <sub>4</sub> in. flat washer type A narrow	4
9	11003	<sup>1</sup> / <sub>4</sub> in. – 20 UNC x <sup>3</sup> / <sub>4</sub> in. bolt	4
10	37018	<sup>1</sup> / <sub>4</sub> in. – 20 UNC nylock nut zinc-plated	3
11	21-034-010	Accessory, electric, battery charger, 24V	1
12	21-156-004	Control, motor, electronic, 1228	1
13	27402	RHSMS #8-32 x 1in.	2
14	37012	#8-32 nylock nut zinc-plated	2
15	01-022-001	Limit switch with roller arm	1
16	22804	Elevator bolt, limit switch	1
17	21-156-002	Control, touchpad, electronic	1
18	21-034-025	Flanged inlet sleeve with locking ring	1
19	11107	<sup>3</sup> / <sub>8</sub> in. – 16 x 1 <sup>1</sup> / <sub>4</sub> in. HHCS #2 zinc-plated bolt	4
20	37024	<sup>3</sup> / <sub>8</sub> in. nylock insert nut	4
21	21-024-038	Handle, grip, rubber end cap	2
22	33618	<sup>1</sup> / <sub>4</sub> in. lock washer	2
23	21-002-059	Frame assembly without power	1
24	21-641-002	Leeson motor/gearbox	1
25	21-034-004	Circuit breaker	1
26	21-042-017	#40 chain, 265 link	2
27	21-145-004	Specialty hardware, chain adjuster	4
28	21-042-019	Gearbox sprocket	1
29	99-034-013	Strap, battery box with buckle	1
30	21-139-002	Battery, 12VDC	2

# PEL-400-72 Exploded Parts Diagram

[NOTES: Bill of materials on following page; item no. 26 not shown]





PEL-400-72 Bill of Materials:

Item no.	Part no.	Description	Quantity
1	21-002-060	Frame assembly without power	1
2	21-513-036	Assembly, deck	1
3	21-024-029	Guard, finished, top	1
4	15-025-006	Grip, handle	2
5	36209	$\frac{1}{2}$ in. – 13 hex jam nut plain	8
6	11055	$\frac{5}{16}$ in. – 18 x 1in. HHCS #2 zinc-plated bolt	2
7	37021	$\frac{5}{16}$ in. – 18 nylon lock nut zinc-plated, #2	2
8	15-016-068	Bracket, battery charger mount	1
9	33004	$\frac{1}{4}$ in. flat washer type A narrow	4
10	11003	$\frac{1}{4}$ in. – 20 UNC x $\frac{3}{4}$ in. bolt	4
11	37018	$\frac{1}{4}$ in. – 20 UNC nylock nut, zinc-plated	3
12	21-034-010	Accessory, electric, battery charger, 24V	1
13	21-156-004	Control, motor, electronic, 1228	1
14	27402	RHSMS #8-32 x 1in.	2
15	37012	#8-32 nylock nut zinc-plated	2
16	01-022-001	Limit switch with roller arm	1
17	22804	Elevator bolt, limit switch	1
18	21-156-002	Control, touchpad, electronic	1
19	21-034-025	Flanged inlet sleeve with locking ring	1
20	11107	$\frac{3}{8}$ in. – 16 x $1\frac{1}{4}$ in. HHCS #2 zinc-plated bolt	4
21	37024	$\frac{3}{8}$ in. nylock nut	4
22	21-024-038	Handle, grip, rubber end cap	2
23	33618	$\frac{1}{4}$ in. lock washer	2
24	21-641-002	Leeson motor/gearbox	1
25	21-034-004	Circuit breaker	1
26	21-042-021	#40 chain, 325 links	2
27	21-145-004	Specialty hardware, chain adjuster	4
28	21-042-019	Gearbox sprocket	1
29	99-034-013	Strap, battery box with buckle	1
30	21-139-002	Battery, 12VDC	2

# Label placement diagram:

Each PEL-400 should be labeled as shown in the diagram below. Contact the factory to order replacement labels.

## Label 454: Charge unit frequently

Charge unit at least every two weeks or leave plugged in when not in use. Disconnect battery when storing unit without power for more than one month.

Cargue la unidad por lo menos cada dos semanas o enchupelo cuando no en uso. Desconecte la batería al salvar la unidad sin carga por más de un mes.

Charger l'unité au moins deux fois par semaine ou laissez branché lorsque la batterie lorsque l'unité est rangée et ne va pas fonctionner pendant plus d'un mois.

VESTIL MANUFACTURING CORP. • Angola, IN 46703 USA  
Phone (260) 665-7586 • Fax (260) 665-1339 • www.vestil.com 454

## Label 287: Model & capacity

MODEL/MODELO/MODÈLE _____	
STATIC CAPACITY (evenly distributed) _____	lbs.
LA CAPACIDAD CONSTANTE (distribuida uniformemente) _____	kgs.
CAPACITÉ STATIQUE (distribuée régulièrement) _____	kgs.
SERIAL/SERIE/SÉRIE _____	

287 REV 0812

## Label 208: Keep clear of pinch point

⚠️ WARNING	⚠️ ADVERTENCIA	⚠️ AVERTISSEMENT
KEEP CLEAR OF PINCH POINT	MANTENGASE ALEJADO DEL PUNTO DE CORTE	SE TENIR À DISTANCE DU POINT DE PINCEMENT

## Label 212: Lock casters

⚠️ WARNING	⚠️ ADVERTENCIA	⚠️ AVERTISSEMENT
LOCK CASTER when loading and unloading	PONGA EL FRENO de la rueda cuando se cargue y descargue	VERROUILLER LA ROULETTE en chargeant et dechargeant

Vestil Manufacturing Corporation • Angola, Indiana USA • Phone (260) 665-7586 • www.vestil.com 212 Rev 0908

## Label 399: Battery connections

**PEL BATTERY CONNECTIONS**

The red wire (from T1 on the motor controller) connects to one side of the circuit breaker. The other side of the circuit breaker connects to the positive (+) post (red) on BAT1.

The short jumper wire connects between the BAT1 negative (-) post (black) and BAT2 positive (+) post (red).

The unfused black wire (from T2 on the controller) connects to the negative (-) post (black) on BAT2.

The charger plugs into the quick-connect harness located on the end of the touchpad harness.

---

**CONEXIONES DE LA BATERIA PEL**

El alambre rojo (del T1 en el control del motor) se conecta a un lado del corto circuito. El otro lado del corto circuito se conecta al poste (rojo) positivo (+) en BAT1.

El alambre de salto corto se conecta entre el poste (negro) BAT1 negativo (-) y el poste (rojo) BAT2 positivo (+).

El alambre negro sin fusible (del T2 en el control) se conecta al poste (negro) negativo (-) en el BAT2.

El cargador se enchufa en el equipo de conexión rápida localizado en el extremo del equipo del teclado.

---

**CONNEXIONS DE BATTERIE PEL**

Le fil rouge (de T1 sur le contrôleur du moteur) connecte à un côté du disjoncteur. L'autre côté du disjoncteur connecte à l'anode (borne positive) - rouge - de BAT1.

Le fil de liaison court connecte entre la cathode BAT1 (négative) - noir - et l'anode BAT2 (positive) - rouge.

Le fil noir sans fusible (de T2 sur le régulateur de charge) connecte à la borne négative (noir) de BAT2.

Le chargeur de batterie branche à la distribution électrique de la prise de courant située sur le bout de la touche à effleurment.

VESTIL MANUFACTURING CORPORATION  
Angola, Indiana USA  
Phone (260) 665-7586 • www.vestil.com 399  
Revision 1003

## Label 527: Only trained, authorized persons should operate this device

### ⚠️ WARNING

Only trained, authorized persons should operate this device. Improper operation might result in serious personal injuries sustained by the truck operator and/or bystanders. Operators must observe the following safety-enhancing practices:

- **BEFORE** operating, inspect mast, carriage, forks/deck, cable/chain, wheels, and brakes for damage. **DO NOT** use if damaged.
- **ALWAYS** walk travel path before using truck to identify hazards:
  - 3 **DO NOT** contact electrical lines or overhead objects with device or load;
  - 3 **DO NOT** travel up/down inclines if an alternate route is available;
  - 3 **DO NOT** travel over debris.
- **ONLY** travel with forks/deck in lowest position appropriate for conditions.
- **ALWAYS** center and evenly distribute loads on forks/deck.
- **ALWAYS** secure load to forks/deck.
- **ONLY** drive or operate truck functions from operator position.
- **DO NOT** exceed maximum rated load (capacity).
- **DO NOT** allow people to ride on device.
- **DO NOT** lift loads over people; **DO NOT** permit people to walk beneath the forks/deck when raised (loaded or unloaded).
- **DO NOT** leave unattended UNTIL fully lowered AND unloaded.
- **DO NOT** modify device in any way.

### ⚠️ ADVERTENCIA

Solo personas entrenadas y autorizadas deben operar este equipo. La operación inadecuada podría resultar en daños serios al operario del camión y/o a los transeúntes. Los operarios deben observar y seguir las siguientes prácticas de seguridad:

- **ANTES** de usar, inspeccione el mástil, el equipo, las horquillas/plataforma, cable/cadena, ruedas y frenos por daños. **NO** use si se observan daños.
- **SIEMPRE** camine el trayecto de viaje antes de usar el camión para identificar riesgos:
  - 3 **NO** toque las líneas eléctricas u objetos altos con el dispositivo o la carga;
  - 3 **NO** viaje en inclinaciones de subida y bajada si hay otra ruta alternativa;
  - 3 **NO** viaje sobre desechos.
- **SOLO** viaje con las horquillas/plataforma en la posición de descenso más apropiada para las condiciones.
- **SIEMPRE** centre y distribuya las cargas uniformemente en las horquillas/plataforma.
- **SIEMPRE** asegure la carga a las horquillas/plataforma.
- **SOLO** conduzca u opere las funciones del camión desde la posición del operario.
- **NO** exceda la capacidad máxima tasada de carga.
- **NO** permita que la gente viaje en el equipo.
- **NO** eleve las cargas sobre la gente; **NO** permita que la gente camine debajo de las horquillas/plataforma cuando este elevada (con carga o sin carga).
- **NO** deje el equipo desatendido **HASTA** que este completamente cargado y descargado.
- **NO** modifique el equipo de ninguna manera.

527 - Rev 1109

## LIMITED WARRANTY

Vestil Manufacturing Corporation (“Vestil”) warrants this product to be free of defects in material and workmanship during the warranty period. Our warranty obligation is to provide a replacement for a defective original part if the part is covered by the warranty, after we receive a proper request from the warrantee (you) for warranty service.

### Who may request service?

Only a warrantee may request service. *You are a warrantee if* you purchased the product from Vestil or from an authorized distributor AND Vestil has been fully paid.

### What is an “original part”?

An original part is a part used to make the product as shipped to the warrantee.

### What is a “proper request”?

A request for warranty service is proper if Vestil receives: 1) a photocopy of the Customer Invoice that displays the shipping date; AND 2) a written request for warranty service including your name and phone number. Send requests by any of the following methods:

<u>Mail</u>	<u>Fax</u>	<u>Email</u>
Vestil Manufacturing Corporation 2999 North Wayne Street, PO Box 507 Angola, IN 46703	(260) 665-1339 <u>Phone</u> (260) 665-7586	sales@vestil.com

In the written request, list the parts believed to be defective and include the address where replacements should be delivered.

### What is covered under the warranty?

After Vestil receives your request for warranty service, an authorized representative will contact you to determine whether your claim is covered by the warranty. Before providing warranty service, Vestil may require you to send the entire product, or just the defective part or parts, to its facility in Angola, IN. The warranty covers defects in the following *original* dynamic components: motors, hydraulic pumps, electronic controllers, switches and cylinders. It also covers defects in original parts that wear under normal usage conditions (“wearing parts”), such as bearings, hoses, wheels, seals, brushes, and batteries.

### How long is the warranty period?

The warranty period for original components is 1 year. For wearing parts, the warranty period is 90 days. The warranty period begins on the date when Vestil ships the product to the warrantee. If the product was purchased from an authorized distributor, the period begins when the distributor ships the product. Vestil may extend the warranty period for products shipped from authorized distributors by *up to* 30 days to account for shipping time.

### If a defective part is covered by the warranty, what will Vestil do to correct the problem?

Vestil will provide an appropriate replacement for any *covered* part. An authorized representative of Vestil will contact you to discuss your claim.

### What is not covered by the warranty?

1. Labor;
2. Freight;
3. Occurrence of any of the following, which automatically voids the warranty:
  - Product misuse;
  - Negligent operation or repair;
  - Corrosion or use in corrosive environments;
  - Inadequate or improper maintenance;
  - Damage sustained during shipping;
  - Collisions or other incidental contacts causing damage to the product;
  - Unauthorized modifications: DO NOT modify the product IN ANY WAY without first receiving written authorization from Vestil. Modification(s) might make the product unsafe to use or might cause excessive and/or abnormal wear.

### Do any other warranties apply to the product?

Vestil Manufacturing Corp. makes no other express warranties. All implied warranties are disclaimed to the extent allowed by law. Any implied warranty not disclaimed is limited in scope to the terms of this Limited Warranty.

